

Aspendale Gardens Primary School Newsletter—Thursday 22nd October



**INQUIRER THINKER BALANCED COURAGEOUS KNOWLEDGEABLE
REFLECTIVE PRINCIPLED CARING OPEN-MINDED COMMUNICATOR**



Primary Years
Programme

Aspendale Gardens is an IB World School that strives to be internationally minded. Our purpose is to provide a supportive safe and dynamic learning environment. We promote inquiry, curiosity, creativity and individuality. We aim to develop a resilient, open-minded school community where all students become independent, emotionally intelligent and socially competent as they strive to achieve their potential as global citizens.

**FRIDAY 23rd OCTOBER—TOMORROW
AFL GRAND FINAL PUBLIC HOLIDAY
NO SCHOOL ON THIS DAY**

**SCHOOL CANTEEN OPEN ON THURSDAY & FRIDAY
LUNCH ORDERS ONLY (Please Order via QKR)
THERE WILL BE NO COUNTER SALES**

2020 DIARY

OCTOBER

Friday 23

AFL Grand Final Public Holiday

NO School on this day

Monday 26

Scholastic Book Club Issue #7 orders are due back

NOVEMBER

Monday 2

NORMAL School Day

Tuesday 3

Melbourne Cup Day Holiday

NO School on this day

DECEMBER

Friday 18

End of Term 4—early dismissal @ 1.30pm

Year

FROM OUR PRINCIPAL

Dear Parents,

Footy Day.



What a way to start Term 4 – our first week back at school after two terms of remote learning! Students were so excited to be able to come to school adorned in their footy colours. Thank you to all the students who donated a **gold coin** to support State Schools' Relief which provides uniforms and school supplies for students in need. As a school we raised **\$828.20** for this very important cause. What a fantastic effort - well done to everyone!

Throughout the day, students had the opportunity to participate in a variety of special football related activities with their teachers. Students were invited to join our virtual AGPS Footy Day Parade, which was hosted by Mr. King via Webex. Each football team's theme song was played and each student was given the opportunity to parade their team colours in their classrooms.

We wish Richmond and Geelong the best of luck on Saturday evening!



**PUBLIC
HOLIDAY!**

Friday 23rd October – AFL Grand Final Public Holiday

Tomorrow is a public holiday granted for the AFL Grand Final. There will be **NO** school tomorrow.



World Teachers' Day Friday 30th October

Friday the 30th of October is World Teachers' Day. It would be lovely if you or your child could write a note or make a home made card for the class teacher showing your appreciation for all they do in their role as a teacher. This is a wonderful way to acknowledge and thank the teachers for their amazing work—especially this year which has been a year like we have never had before.

First Aid Training

This week we had 23 staff members refresh their CPR training and 10 staff members updated their Level 2 First Aid on-line and via face-to-face assessments. Thank you Annie for organizing this, and thank you to the staff for their commitment to remaining up to date with the latest life saving procedures.



Scholastic Book Club Issue #7

All orders for Book Club Issue #7 close on Monday 26th October. Please ensure all orders are placed by this date. Late orders cannot be accepted.

Melbourne Cup Eve & Cup Day

Monday 2nd November is the day before Melbourne Cup Day – this will be a **NORMAL** School Day. Tuesday 3rd November is Melbourne Cup Day Holiday - there will be **NO** school on this day.



Water Bottles and Sun Hats

Students are reminded to bring full water bottles to school as the bubbler drinking taps are closed and are not to be used until further notice from the Department of Education. Students are required to wear the school broad-brimmed hat whilst outside.

Second-hand Uniforms

Thank you to those families who continue to donate their second hand uniforms. We have new families looking for second hand uniforms, so if you have any at home that you no longer use and are in good condition, please consider donating them to school. All items are \$5.00 each. The second hand uniform shop is open during school hours. Please ring the office to let them know if you will be coming in.



Enrolments for 2021 and Departures at the End of 2020

Our enrolments at Foundation level for 2021 are still open. If you have not as yet enrolled a sibling for 2021, please do so as soon as possible. This will assist us immensely with our staffing processes for 2021. If you know you are definitely moving from Aspendale Gardens Primary School at the end of this year could you please let the office know as soon as possible. This will greatly assist our planning for 2021 also. Thank you to those families who have already let us know.

Name of Student	Class	Relocating To	New School's Name

Finally,

Please no U turns in Kerr Crescent!

Have a wonderful weekend everyone.

Cheryle Osborne



STARS OF THE WEEK

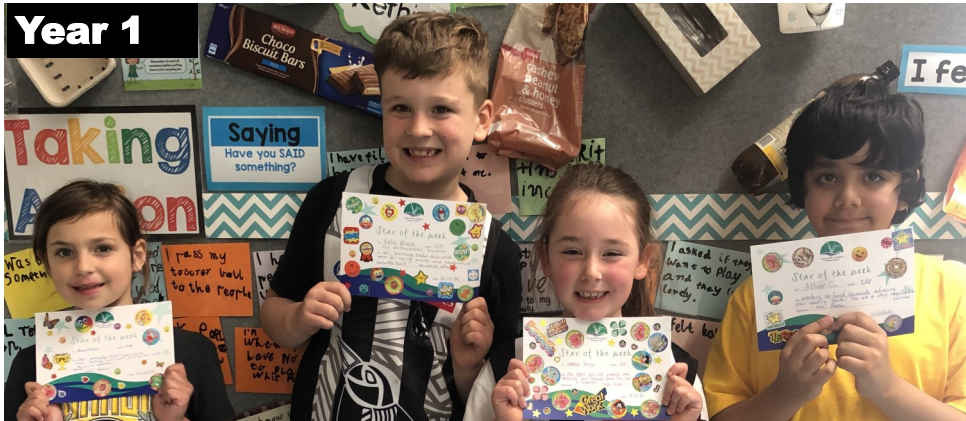
Week 2 – Term 4



Foundation



Year 1



Year 2



Year 3





STARS OF THE WEEK

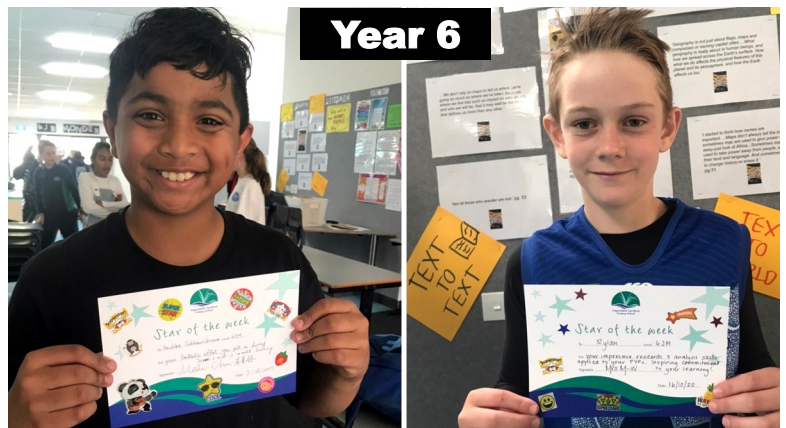
Week 2 – Term 4



Year 5



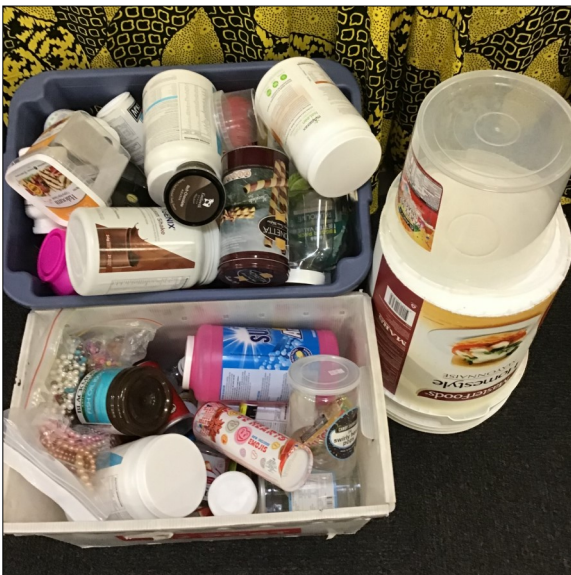
Year 6





Performing Arts @ AGPS

We are hoping to be able to fund some new instruments for our students from the sale of our reconditioned guitars. if you would like to purchase one, please contact Mrs. Nicolson to arrange an inspection time.



Welcome Mrs. M^cGregor to the Junior Performing Arts Department while Mrs. Kegen is on long service leave.

We still need plastic containers with lids and old beads for our unit on recycling. We will be making shakers and drums.

This week students enjoyed reconnecting with our newly reconditioned GLOCKENSPIELS!

Congratulations to 3DB, 5AA, FEC & 5RL for their exceptional efforts in Performing Arts this week.

Merry Music Making!



Mrs. Nicolson

Right handed acoustic electric with hard case (one string missing) \$150



Ibanez right hand electric With hard case \$300



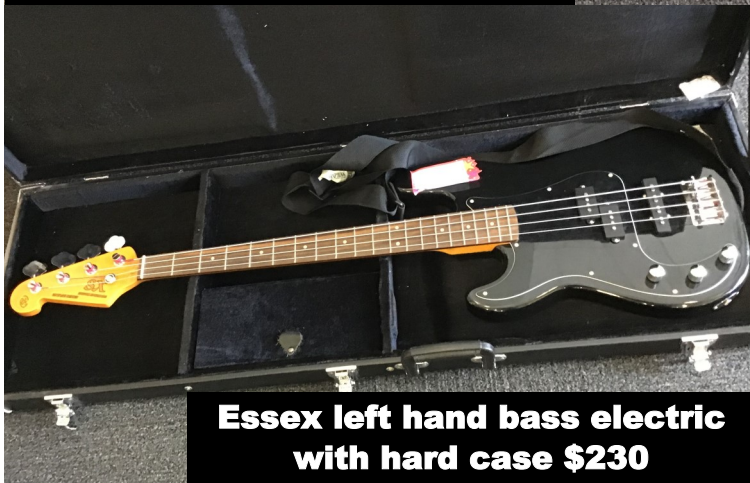
**2 x electric acoustic one right hand, one left hand \$150
one hard case \$20**



Custom made left hand electric with hard case \$300



Essex left hand bass electric with hard case \$230



3 x student acoustic guitars \$30 each



2 x Fender electric with Hard cases \$130 each





FOOTY DAY GALLERY

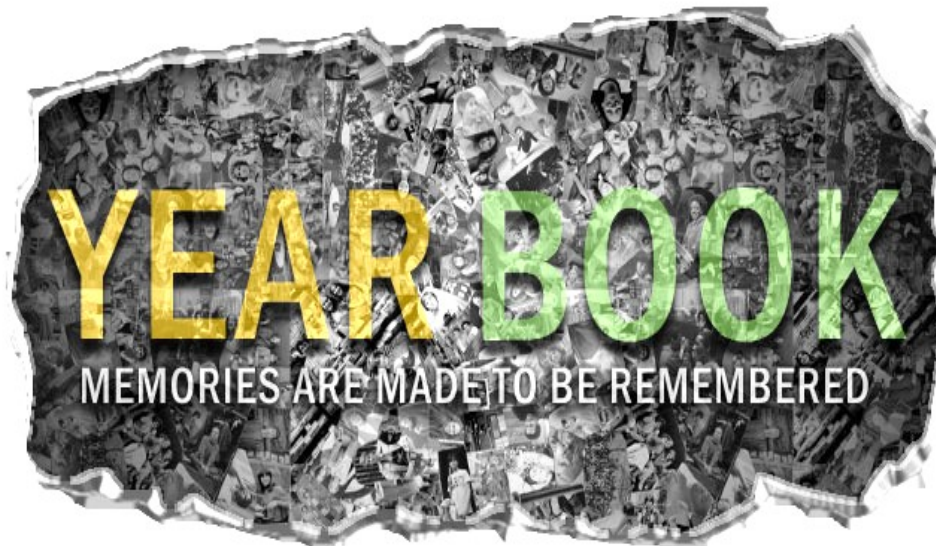




AGPS Yearbook

Front Cover Competition

IT IS TIME TO DESIGN OUR
2020 YEARBOOK COVER!



- To enter you need to come to the Office and collect the paper that has the correct margins. Please ensure you stay within these margins.
****Please ensure you collect specific paper from the Office****
- ALL entries must be in PORTRAIT orientation.
- Your entry should represent our school: this could be showing our PYP attributes, Houses, our location, activities, classes, etc.
- The design should be hand made by the student only
- Please do not put any embellishments on your design (i.e. stickers, glitter, collage)
- To enter you must hand your design into the office ladies
- Write your name and class ON THE BACK of your design in pencil
- DO NOT fold or bend your entry.
- Please DO NOT put names of students or teachers on your design
- Please check for any grammatical or spelling errors BEFORE submitting.

Entries close: Friday 30th October, 2020



ASPENDALE GARDENS COMMUNITY SERVICE INC.
103-105 Kearney Drive
Aspendale Gardens Vic 3195

**2021 3YO PRESCHOOL
places available
ENROL NOW!!**



Application forms available at
<https://www.agcsinc.org.au/3-year-old-preschool>

For more information visit our website
or email kim.fulton@agcsinc.org.au

Hatha Yoga

Are you interested in joining Online
Hatha Yoga sessions in Term 4 via Zoom?



FIRST SESSION FREE!
Cost: \$5.00 per class

Please let us know by emailing:
enquiries@agcsinc.org.au or calling 9587 5955

Tel: 9587 5955 Web: www.agcsinc.org.au Facebook: www.facebook.com/AGCSinc

2020/2021 TERM DATES

Term 4, 2020

Monday 12 October to
Friday 18 December

Term 1, 2021

Thursday 28 January to
Thursday 1 April

Term 2, 2021

Monday 19 April to
Friday 25 June

Term 3, 2021

Monday 12 July to
Friday 17 September

Term 4, 2021

Monday 4 October to
Friday 17 December

Develop the confidence of a winning smile

Crooked teeth? Bad bite? Get professional
advice from a specialist orthodontist today.
Free initial visit. No referral needed.



straight orthodontics
health | harmony | confidence

MENTONE **9585 8000**
FRANKSTON



Aspendale Gardens Dental Group

8a Springvale Rd, Aspendale Gardens, VIC 3195 www.aspendalegardensdentalgroup.com.au

PH: 97738688

Our family friendly dental team aim to
provide the **best** in modern dentistry

DR CRAIG JAFFREY
DR ANNETTE LEW



SERVICES PROVIDED

General Dentistry
Childrens Dentistry
Crowns and Bridges
Dental Implants
Teeth Whitening
Orthodontics (Braces)
Mouthguards
Endodontics (Root Canal Treatment)



**MEDICARE
CHILD DENTAL
BENEFIT
SCHEME
AVAILABLE**

Children under the age of 4 receive **FREE** dental examinations
PLUS all new patients receive a complimentary welcome pack



Medical *for* Everybody

Shop 15/11 Narelle Drive, Aspendale gardens

Phone: 9590 9955

www.med4everybody.com.au



*Caring & friendly team of doctors
looking after your family*

- Medical GP clinic located conveniently across from the school at Aspendale Gardens Shopping Centre
- Bulk billing available for all children below 16 years old
- Currently offering bulk billed telehealth consults for all ages during the COVID-19 pandemic

We welcome new patients of all ages and offer a wide variety of services ranging from newborns to elderly

Podiatry services also available

Now also open on Saturdays

Mon: 8:30am to 6:00pm
Tues: 9:00am to 5:00pm
Wed: 9:00am to 5:00pm
Thurs: 9:00am to 5:30pm
Fri: 9:00am to 5:30pm
Sat: 9:00am to 12:00pm

*Influenza
vaccinations
available. Please
call to enquire*

FOLLOW us on social media for regular updates



m4e.aspendalegardens



The Studio of Dance



Dance Tuition in: Jazz, Classical Ballet,
Contemporary, Lyrical,
Tap, Theatrical, Modern-Neo, Hip-Hop
Character Ballet, Acrobatics & VCE Dance

All ages welcome 3yrs – Adults - Beginner to Advanced standard
Optional Exam and Competition Work, Local Performances

(100% Pass Rate in Exams, Aggregate Winners in Eisteddfods, Ballet Company Members, All costumes supplied)

Brand new fully equipped

**Dance Studio's
9A Heland Place,
Braeside**

Full Mid-Year & End of Year
Dance Production

0413586230

www.thestudioofdance.com.au

**Principal: Emma Thorneycroft (Diploma of Arts in Dance Instruction and Management, M.D.F.T.A,
Accredited teacher and school with the Acrobatic Dance Association.)**

Leads a small and dedicated teaching team of young, energetic and experienced teachers.

