

# Aspendale Gardens Primary School

## Newsletter—Friday 31<sup>st</sup> January



**INQUIRER THINKER BALANCED RISK-TAKER KNOWLEDGEABLE**  
**REFLECTIVE PRINCIPLED CARING OPEN-MINDED COMMUNICATOR**



*Aspendale Gardens is an IB World School that strives to be internationally minded. Our purpose is to provide a supportive safe and dynamic learning environment. We promote inquiry, curiosity, creativity and individuality. We aim to develop a resilient, open-minded school community where all students become independent, emotionally intelligent and socially competent as they strive to achieve their potential as global citizens.*

## Welcome Back to School for 2020

### 2020 DIARY

#### FEBRUARY 2020

Monday 3 Year 2 Information Night 5.15pm—6pm  
 Year 4 Information Night 6.15pm—7pm  
 Tuesday 4 Year 1 Information Night 5.15pm—6pm  
 Year 6 Information Night 6.15pm—7pm  
 Wednesday 5 Year 3 Information Night 5.15pm—6pm  
 Year 5 Information Night 6.15pm—7pm  
 Monday 10 School Photo Day—please bring photo envelope on the day

#### FEBRUARY 2020

Wednesday 12 First Fundraising Meeting for 2020 (new members welcome ) 7pm in Staffroom  
**Thursday 13 Foundation Buddy Bear Picnic 5—6.30pm**  
 Monday 17 Year 6 Canberra Tour departs  
 Thursday 20 Foundation Information Night (5.30pm—6.30pm)  
 Friday 21 Year 6 Canberra Tour returns

### FROM OUR PRINCIPAL

Dear Parents,

Welcome back to all our wonderful families for the commencement of the 2020 school year. I hope you all had a very happy festive season with some wonderful family time together. We look forward to another fabulous year at Aspendale Gardens Primary School.



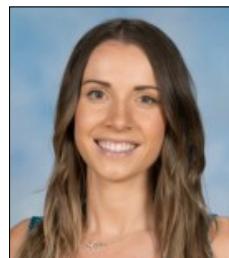
A special welcome to all our Foundation students and to our new families.

We look forward to sharing an exciting and successful educational journey with you. The Foundation students have settled in extremely well, judging by the smiles on both children and teachers' faces.

A huge thank you to the teachers who came in over the holidays to ensure their classrooms were ready for the students. The rooms look brilliant. Thank you also to the office staff who came in to prepare for the start of the school year along with Graeme and Elly our maintenance / grounds staff who did a fabulous job ensuring the grounds were tidy and maintenance items completed.

#### Welcome Back Returning Teachers

I would like to welcome back Mrs Jess Burton, Mrs Jo McDougall and Mrs Hayley O'Donnell who have returned from family leave, and welcome back also to Miss Niamh Aherne We look forward to them joining us once again.



## **Coronavirus Update**

An update was sent via Compass yesterday. The main message was:

“The recommendation is that parents/guardians/carers of students should ensure that any returning student is isolated at home and should not attend school for 14 days:

- following exposure to any confirmed novel coronavirus case; or after leaving Hubei Province.”

If you meet this criteria please adhere to this advice.

## **School Photos**

The 2020 school photos will be taken on **Monday 10<sup>th</sup> February**. Envelopes have been distributed to all students. Payment can be made by credit card online, or payment by cash can be made on Photo Day. If you have not received an envelope please visit the office to get one.

Students must present their own envelope to the photographer on Photo Day. Envelopes are **not sent** to school prior to Photo Day.

If you would like to have a Family Photo of your children please collect a Family Photo envelope from the office prior to Photo Day.

## **Working with Children Checks**

As part of the Education Department's guidelines and school accountability, we require each parent volunteer at our school to please obtain a 'Working with Children Check'. These will need to be seen at the school office as you sign in and details will be entered into our computer system. If you already have a WWCC please ensure it is current and details are given to the office ladies.

*Please obtain these ASAP as we value your support for our school programs. You can apply for your WWCC online. Please use this link to access the website: <https://www.workingwithchildren.vic.gov.au/>*

## **School Council Notice of Election**

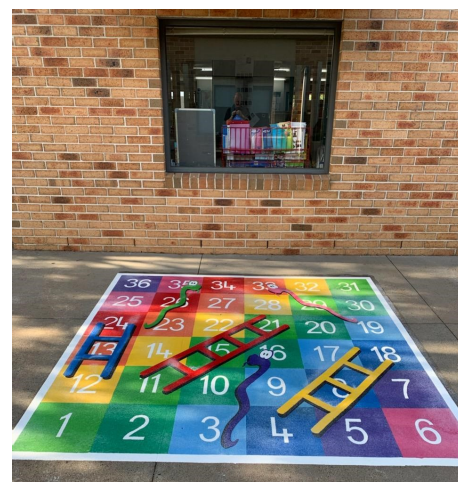
Nominations for the Aspendale Gardens Primary School Council will be called for next month. Each year half the Council is up for election. We have three Council positions and one Community Member position available. Please consider applying for a position. It is an excellent opportunity to become more involved in your child's school.



## **Facilities Update**

During the holidays the main item was the commencement of the refurbishment of our school oval. It is well under way and the new turf will be installed very soon. The oval will be out of bounds for all of Term 1, so the excitement when it opens in Term 2 will be high as we commence the footy seasons.

Also, yesterday we had an alphabet caterpillar added to the courtyard paving, and a game of snakes and ladders added to the paving in the courtyard outside Art-room 1. We are sure the students will get much enjoyment using these new play additions to our school grounds.



## **Parent Information Evenings**

Instead of 'Meet the Teacher' evenings this year we will be having Parent Information evenings for each year level. See further in the newsletter for more details.

### School Levy Payment/Excursion Levy



Thank you to all the parents who have already paid their school fees. No paperwork was sent home for fees. All school fees have been uploaded to Compass and can be paid through the app.

We request that all families please pay the school fees by **no later than** Friday 21<sup>st</sup> February. If you are opting to pay the Excursion Levy up front for the year, the final date for payment for this is also Friday 21<sup>st</sup> February. If you are having any difficulties regarding payment of fees, please make an appointment to arrange a payment plan with our Business Manager, Rebecca Russell.

### Foundation Families Buddy Bear Picnic

As a welcome to our new Foundation students and their families, we will be hosting a Buddy Bear picnic on the school's basketball court. This will be held on Thursday 13<sup>th</sup> February 5.00pm to 6:30pm. Parents are invited to bring along a picnic dinner to have at school. This is a wonderful chance for all parents to meet other parents in an informal and friendly atmosphere. We hope you can join us for this happy occasion.



### Curriculum Day – Tuesday 10<sup>th</sup> March

Our second curriculum day will be on Tuesday 10<sup>th</sup> March – the day after the Labour Day holiday. We will be combining with local schools to further develop our IB Primary Years Program (PYP).

### Asthma / Anaphylaxis /Allergy Plans



Documentation regarding student asthma plans is available from the office. Please update your child's details and return to the office as soon as possible.

Parents of anaphylactic children and children with allergies should visit the office to update necessary paperwork and provide appropriate medication.

Please ensure that the school has medication that is 'in date'.



### Year 6 Camp



The Year 6 Camp is **only** three weeks away. Some parents need to finalise payment. In addition, some student's medical forms are yet to be returned. Please hand payments and medical forms to classroom teachers. Please return these ASAP so final preparations for the camp can be completed.

### School Assembly

We decided to cancel assembly today due to the extreme heat which would have made it very uncomfortable in the hall. Assembly will be at the regular time of 2:30pm on Friday afternoons.



We have had a magnificent start to the school year and I look forward to another fabulous year at Aspendale Gardens Primary School.

**Cheryle Osborne**

## 2020 TERM DATES

TERM 1:	Wednesday 29 January—Friday 27 March
TERM 2:	Tuesday 14 April—Friday 26 June
TERM 3	Monday 13 July—Friday 18 September
TERM 4:	Monday 5 October—Friday 18 December

# **IMPORTANT DATES**

## **2020**

### **INFORMATION NIGHTS**

In 2020, we will be starting the school year off by hosting a series of *Parent Information Sessions* for each year level, in lieu of the 'Meet the Teacher' interviews.

The purpose of these information sessions is to ensure teachers and families have a shared understanding of the expectations for the year level, including homework expectations, important dates and events, classroom routines, weekly timetable, communication guidelines and much more!

These sessions are an important step in helping families start the new year off with confidence.

It is also a chance to meet your child's new teacher.

Year 2 Monday 3 <sup>rd</sup> February 5.15pm—6pm	Year 1 Tuesday 4 <sup>th</sup> February 5.15pm—6pm	Year 3 Wednesday 5 <sup>th</sup> February 5.15pm—6pm	Foundation Thursday 20 <sup>th</sup> February 5.30pm
Year 4 Monday 3 <sup>rd</sup> February 6.15pm—7pm	Year 6 Tuesday 4 <sup>th</sup> February 6.15pm—7pm	Year 5 Wednesday 5 <sup>th</sup> February 6.15pm—7pm	

There will be an opportunity to let your child's new teacher know about their personal strengths, interests and any concerns in a questionnaire.

This will be handed out at the Information Session.





# Performing Arts @ AGPS



**CONGRATULATIONS** to Matilda O. & Mathilda R. as our new Performing Arts leaders.

## **Glee Club**

Welcome Maddie Stewart as Glee Club Assistant. I look forward to meeting some new Year 3 members this year! Rehearsals commence next **Tuesday 4<sup>th</sup> February at 8.30am** in the Performing Arts Room 1. Please bring a display folder for music. All Year 3 to 6 students are welcome.



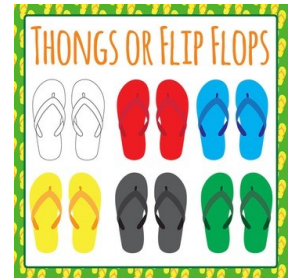
## **Bandfest**



Congratulations to all our ROCKSTARS of the future! After only a term together they performed at a lunchtime concert last year. This semester Years 4 to 6 will be learning to play **keyboard** and **ukulele** and hopefully starting up some more bands!

## **Recycling**

Please donate any old thongs/flip flops, even broken ones to Performing Arts. They will be used as instruments. We are also collecting any size, plastic tube containers with lids to recycle as shakers. If you have any old beads at home that you no longer require, they will also come in handy to fill shakers!



Welcome and Happy New Year!

Merry Singing—**Mrs Nicolson**



**MSP Melbourne**

**T** 1800 314 480 | **E** melbourne@msp.com.au

Say cheese!

Aspendale Gardens Primary School's photo day is fast approaching – make sure you download the app 'MSP Online' or order through your Compass portal.

**Photo Date: Monday, 10 February 2020**

**www.msp.com.au**

**CAPTURING  
SCHOOL  
MOMENTS**

## SCHOOL HOLIDAY ACTIVITIES AT ASPENDALE GARDENS COMMUNITY CENTRE

### STORYTIME & CRAFT for kids aged 2-5 years

Thursday 23 January | 10.30am to 11.30am



Bookings have opened for our Storytime & Craft session for January school holidays.

Don't miss your place and book today by calling 1300 135 668, in person at your local library or online at [kingston.vic.gov.au/library](http://kingston.vic.gov.au/library)

### BASKETBALL ACTION Wednesday 22 January



4 to 7 years  
10.00am to 12.00pm:  
\$25.00

Bookings Essential:  
[www.trybooking.com/BGNIR](http://www.trybooking.com/BGNIR)

7 to 11 years  
1.00pm to 3.30pm:  
\$30.00

Bookings Essential:  
[www.trybooking.com/BGNJU](http://www.trybooking.com/BGNJU)



# PLAYERS WANTED

Know someone who might be interested in playing netball during 2020?

***We're currently seeking players who were born in 2010 and 2012.***

No experience necessary.  
Learn the game in a friendly, team environment and have lots of fun!

Email us at:

**[enquiries.edithvale.netball@gmail.com](mailto:enquiries.edithvale.netball@gmail.com)**



**[www.mordyredbacksjfc.com.au](http://www.mordyredbacksjfc.com.au)**



## PLAYING FOOTY IN 2020? COME AND PLAY AT MORDY REDBACKS JFC

**A CLUB FOR THE WHOLE FAMILY - BRAND NEW CLUB ROOMS - LOTS OF FUN**

**AUSKICK, U8S, U9S, U10S, U11S & U12S**

**Register now or come to our registration day on SATURDAY 8 FEB 9AM at BEN KAVANAGH RESERVE**

**Want to know more? Send us an email [mordyredbacks@gmail.com](mailto:mordyredbacks@gmail.com)**



# Grasshopper SOCCER



Australia's # 1  
non-nompetitive  
soccer program.

Teaching children  
aged 2-12  
soccer basics  
in a fun & social  
environment.



[www.grasshoppersoccer.com.au](http://www.grasshoppersoccer.com.au)

## KENPO KARATE

*Bully Proof your Child*



**NOW ENROLLING**

*Kids, Teens & Adults*

COME AND TRY 2 FREE LESSONS

*Working with Children Checked  
Gov Accredited Coaches*

**THE DOJO BRAESIDE  
ACADEMY OF MARTIAL ARTS**

Unit 6 / 314 Governor Rd Braeside

[www.personalselfdefence.com](http://www.personalselfdefence.com)

Sensei Peter Tas: 0438 946 781



## Chelsea Calisthenics Club

Try an exciting Sport that incorporates elements of...

**FUN - FITNESS - SINGING - DANCING  
TEAM SPIRIT - FRIENDSHIP - GYMNASTICS  
FLEXIBILITY - CONFIDENCE**

**COORDINATION - PERFORMANCE SKILLS**

Calisthenics is a sport for everyone, it combines the best aspects of Sport and Performing Arts and can be enjoyed by all ages and abilities.

If this sounds like you, come and join us  
at Chelsea Calisthenics Club.  
Our club, coaches and members would love  
to welcome you to their teams.

More information: W: [www.chelseacalisthenics.com.au](http://www.chelseacalisthenics.com.au)

E: [enquiries@chelseacalisthenics.org.au](mailto:enquiries@chelseacalisthenics.org.au)  
Sports Women Centre, Sturdee St Chelsea



*Something for everyone*

### CLASS TIMES

Babies Recreational - 4 years and under  
Wednesday 10am - 10.30am



Tinies - 3 - 7 years, Saturday 9am

Sub-Juniors - 8 - 10years, Saturday 11.30am

Juniors - 11- 13 years, Tuesday 4.45pm

Intermediates - 14 - 17 years, Monday 5pm

Seniors - 17 years & Over, Wednesday 6.30pm



# The Studio of Dance



Dance Tuition in: Jazz, Classical Ballet,  
Contemporary, Lyrical,  
Tap, Theatrical, Modern-Neo, Hip-Hop  
Character Ballet, Acrobatics & VCE Dance

All ages welcome 3yrs – Adults - Beginner to Advanced standard  
Optional Exam and Competition Work, Local Performances

(100% Pass Rate in Exams, Aggregate Winners in Eisteddfods, Ballet Company Members, All costumes supplied)

**Brand new fully equipped**

**Dance Studio's**

**9A Heland Place,  
Braeside**

Full Mid-Year & End of Year  
Dance Production

**0413586230**

**[www.thestudioofdance.com.au](http://www.thestudioofdance.com.au)**

Principal: Emma Thorneycroft (Diploma of Arts in Dance Instruction and Management, M.D.F.T.A,  
Accredited teacher and school with the Acrobatic Dance Association.)

Leads a small and dedicated teaching team of young, energetic and experienced teachers.



# TENNIS COACHING



## TERM 1 LESSONS

Limited vacancies are now available at

**St Louis Tennis Club**  
for after school coaching  
**Monday to Thursdays**

\*Hotshots program

\*Group lessons

\*Private lessons

\*Squad lessons

\*Cardio tennis for adults

\*Pre-school lessons

**For enquiries contact**

**Trish 0421 604 849**

TRISH ANGLISS  
TENNIS COACHING  
TA JUNIOR  
DEVELOPMENT  
COACH

Phone: 0421 604 849

E-mail:

trishangliss@optusnet.com.au

St Louis Tennis Club  
37 Dolphin Street  
Aspendale 3195



**we don't just  
teach drama,  
we teach life!**

After-school drama classes that will make the world their stage.

- We provide an environment that stimulates creativity, curiosity and a growth mindset
- The ability to concentrate, critically think and speak out is nurtured
- Essential life skills like collaboration, self-regulation, and citizenship are further developed
- Our acclaimed self development drama program has been making a difference since 1979

**join a class today**

☎ 03 9530 6080  
✉ melbournesouth@ogradydrama.com.au  
🌐 ogradydrama.com.au

Pakenham | Endeavour Hills |  
Patterson Lakes | Aspendale Gardens  
| Hampton | Berwick | East Bentleigh |  
Parkdale | Dingley



# Aspendale Gardens Dental Group

8a Springvale Rd, Aspendale Gardens, VIC 3195 📍 [www.aspendalegardensdentalgroup.com.au](http://www.aspendalegardensdentalgroup.com.au)

**PH: 97738688**

Our family friendly dental team aim to provide the **best** in modern dentistry

**DR CRAIG JAFFREY**  
**DR ANNETTE LEW**



## SERVICES PROVIDED

General Dentistry  
Childrens Dentistry  
Crowns and Bridges  
Dental Implants  
Teeth Whitening  
Orthodontics (Braces)  
Mouthguards  
Endodontics (Root Canal Treatment)



**MEDICARE  
CHILD DENTAL  
BENEFIT  
SCHEME  
AVAILABLE**

Children under the age of 4 receive FREE dental examinations  
PLUS all new patients receive a complimentary welcome pack

